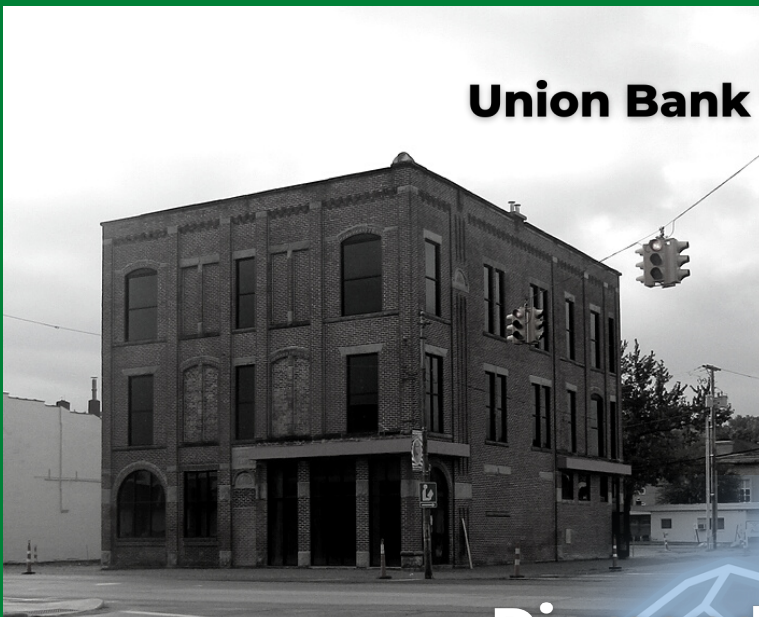




2022

# ANNUAL REPORT

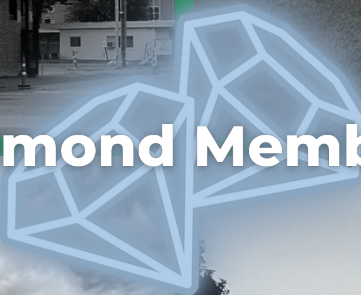
**Union Bank**



**Lapham Hickey Steel**



**Diamond Members**



**Premier Bank**



**Antwerp Exchange Bank**



# A Message from the Director



## Greetings from the Paulding County Office of Economic Development

2022 has been an outstanding growth year for the Paulding County economy. As you read through this annual report you will be reminded of, or learn about, the many investments in new and existing businesses and commercial property around the entire county.

Having completed a couple years as director for you in the Paulding County Economic Development office, this year we took a step back to get a better understanding of where we have voids in infrastructure, housing, retail and commercial buildings, property and ultimately workforce. It has been very humbling to see where we stand today in all of these categories. We do understand what it will take to get us back up to level playing field, and even ahead, for future growth opportunities. It will take investment beyond imagination. The good news is, we collectively seem to be on a forward-thinking path with many of our county, township, village and business partners on board. Although it will take some time, there are certainly even more exciting times ahead in Paulding County.

We want to **THANK** each of you for your financial support in yet another record-breaking investment year. As a 501c3 business, it takes partners like you, to allow us to function and provide the many benefits we offer the Paulding County community.

We are excited to move forward into 2023 and see, once again, what we can accomplish together. Please keep us in mind as you work to help us remain **#pauldingcountystrong**

*- Tim Copsey, Director*

## Economic Development Investors:



Antwerp CIC • Clouse Construction Corporation • Cooper Farms • Entrust Capital Management\* • Haviland Drainage Products, Inc • Kauser Trucking • LafargeHolcim • MY102.7/MYSPORTS.LIVE • Paragon Tempered Glass • Paulding County Township Association\* • Pioneer Lines • Roberts Manufacturing • Rudolph Libbe Group • State Bank & Trust • Straley Realty & Auctioneers, Inc. • The Gardens at Paulding • Village of Antwerp • Village of Oakwood\* • Wagner Roofing & Construction Solutions • Wessler Engineering





## SILVER MEMBERS:

**AEP Ohio • Arthur Telephone Company • Baughman Tile Co. •  
Brady Family Partnership LP • Castleman Properties, Inc. - DQ •  
Ebel's Butcher Shop\* • EDP Renewables\* • Farmers & Merchants •  
State Bank • First Financial Bank • Fraternal Order of Eagles •  
GreenTop Acres, LLC • Herbert E. Orr Co, Inc. • Jake Places •  
Jones & Henry Engineers Ltd. • Kenneth Myers Construction Co.\* •  
Lippert Plant 112 • Logisticize LTD • Marlin & Association Financial  
Services • MetaLink Technologies • NASG Seating Paulding • New  
American Reel Company, LLC • Northwest Ohio Wind, LLC\* •  
Northwest State Community College • Ohio Gas Company •  
OhioMeansJobs - Paulding County • Paulding County Hospital •  
Red Angel Pizza, LTD • RedLine Equipment\* • Sherwood Mutual  
Telephone Association (SMTA) • Sherwood State Bank • Solid  
Ground, LLC (Property Management) • Tenneco\* • Toledo-Lucas  
County Port Authority\* • Vantage Career Center**

## BRONZE MEMBERS:

Aderman Family Dentistry • Agracel, Inc. • Antwerp Tool, Die & Engineering, Inc. •  
Baker - Shindler Contractors • Benton Township Trustees • Bruce Guilford Real  
Estate & Auctioneering • Citizens National Bank • Dooley Funeral Home • Financial  
Partners Federal Credit Union • Friends of the Paulding County Park District •  
Garmann Miller\* • Gerken Companies • Grant's Catering • H2O to Go Water Stores •  
Hahn Farms • Harrison Township Trustees • Harvest Farm Management •  
Hormann's Heating & Cooling • John Paulding VFW Post #587 • Kahle Company •  
Kenn-Feld Group • Knights of Columbus - Paulding\* • Mannik/Smith Group •  
Mansfield Welding Service LLC • Manz Insurance & Accounting • Travis & Stacy  
McGarvey • Mercer Landmark Inc. • Joe & Sue Meyer • Midwest Community Federal  
CU • Mosser Construction, Inc. • Nooter • One Energy\* • OSU Extension • Parrish  
Orthodontics • Paulding Park District Board\* • Paulding Township Trustees • Payne  
Chamber of Commerce • Pleasant Valley Golf Course • PMI (Precision Mechanical  
Insulators) • R & B Fabrications, Inc.\* • RayleCom Communications, LLC\* •  
Schlatter's LLC • Schweller Electric • Shisler Insurance Agency, Inc. • Stahl Stoller  
Meyer Ins. Center • Straley Insurance Services, LLC • Systech Environmental  
Corporation • Todd Farms & Excavating • Tri-County Roofing, Inc. •  
TTL Associates\* • United Way of Paulding County • VanCrest of Payne  
• Village of Broughton\* • Waters Insurance, LLC •  
Keith & Joyce West • Williamson Insurance Agency • Yenser/Gross Heating & Air

## COPPER MEMBERS:

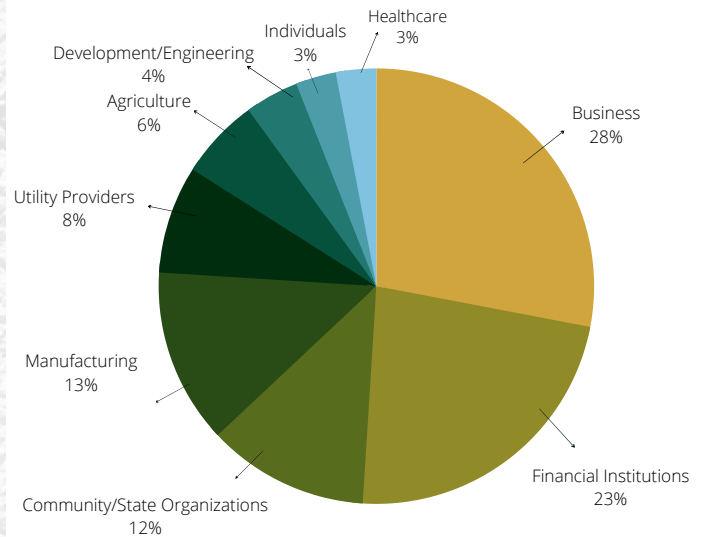
&Junque • A Plus Propane, LLC • Access Engineering Solutions, LLC • Affordable Septic, Sewer and  
Excavating\* • Ag Credit • Al-Co Products, Inc • Alexander & Bebout, Inc.\* • All Seasons Carpet  
Cleaners • Animal Clinic of Paulding • Ann's Bright Beginning Preschool • Antwerp Chamber of  
Commerce • Antwerp Local School • Antwerp Pharmacy, Inc. • Antwerp Pit Stop, LLC • Antwerp VFW  
Post # 5087 • Attorney James Sponseller • Auglaize Canoe & Kayak • Auglaize Spirits & Coffee, LLC •  
Bashore Reineck Stoller & Waterman Inc. • Bee Gee Realty & Auction Co\* • Beilharz Architects, Inc •  
Benschneider Auto\* • BF Goodrich\* • Bittersweet Inn • Blue Creek Township Trustees • Black Swamp  
Gleaner Arbor #780 • Boyd Automotive Ltd • Brown Township Trustees • Buckeye Hearing Health, LLC  
•David Burtch • C & Y Oil Company\* • Canal Junction Farm\* • Carryall Township Trustees • George &  
Deb Carter • Cook & Gorrell, Ltd. • Country Inn Living Center • Crane Township Trustees • Decks N  
Places • Don & Perry's Furniture • Dr. Michael Mott DDS • Dr. Sarah Mowery DDS • Edward Jones •  
Elite Embroidery • Emerald Township Trustees • Flat Rock Photography • Flat Rock Sheds\* • Foltz  
Insurance Agency, Inc. • FSC Securities Corporation • Gamble Home Improvements • GenFed Credit  
Union • Habitat for Humanity • Heitmeyer Funeral Home • Helena Crop Insurance Agency • Hooker  
Enterprises Painting • Ivy Tech Community College\* • J. Scott & Tiffany Beckman • Jackson Township  
Trustees • Jill Erford Massage Services • Kauser Excavating • Kennedy Trenching & Excavating • Ken's  
Furniture • Rick & Renee King • Roy & Deb Klopfenstein • Jason & Jayme Landers\* • Tony & Kay  
Langham\* • Latty Township Trustees • Maid to Achieve Cleaning Services LLC\* • Manz  
Enterprises/Emerald Rd. Storage • Manz Web Design • Maranatha Industries • Marco's Pizza, E&S  
Bueter Corp. • Matson Family Chiropractic • MCK Leasing, LLC (Mike & Cindy Kauser) • Microtronix E-  
Solutions • Mighty Cube, LLC • Milan Grain & Feed Center\* • Morrow Painting • MTJ Farms, LLC\* •  
National Oil & Gas, Inc. • Natural Design & Graphics • Northwestern Ohio Community Action  
Commission (NOCAC)\* • Nucor\* • Oasis Bar and Grill • Office Partners, LLC • P.C. Workshop, Inc. •  
Papin Photography\* • Paulding County Carnegie Library • Paulding County Senior Center • Paulding  
Exempted Village Schools • Paulding Napa True Value Hardware • Petals & Vines • Dennis Price • R & L  
Truss, Inc. • Dennis Recker • Red Oaks Pet Cottage • Remax Realty • Ron Ertler • Rupp Rosebrock •  
Daniel & Rebecca Schutt • Stan & Barb Searing • Sprow Appraisal Company • Terry's Mower Sales •  
The Award Shop • Treeline Service, LLC\* • Vagabond Village • Village Apothecary of Paulding • Village  
of Cecil • Village of Melrose • Village of Payne • Ward Construction Co • Washington Township  
Trustees • Wayne Trace Local School District • Michael & Laura Wehrkamp • Weiseco LTD\* • West  
Bend Printing • Western Buckeye Educational Service Center\* • Rex & Teresa Williamson •  
Windstream Communications\* • WMEA

## ASSOCIATE MEMBERS:

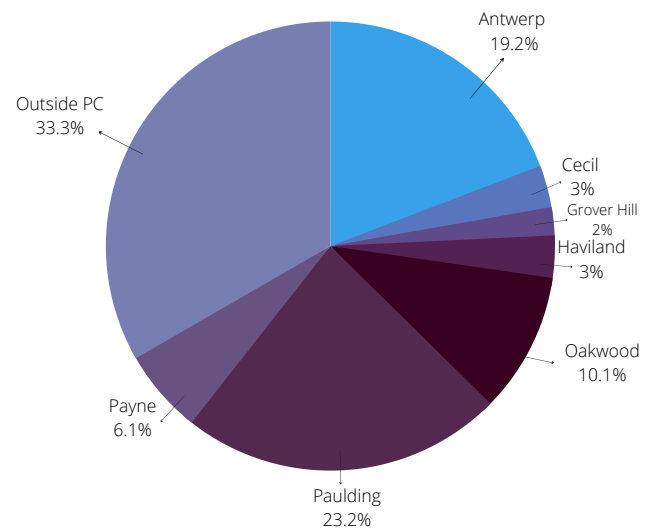
Double D Dairy Bar\* • Over The Hill Specialized Mowing\* • Jeff Pieper\*  
• Matt & Linda Reineck • Dr. John & Karen Saxton

\*Indicates New 2022 Investment Member

## Contributions by Sector



## Contributions by Village



✓ **22 COMMERCIAL PROPERTY SALES**

✓ **23 PCBW RECORDINGS**

✓ **41 NEW PCED MEMBERS**

✓ **191.92 MILES OF BROADBAND EXPANSION**

✓ **\$75,915 GRANT MONEY RECEIVED**

**\$65,302,241 INVESTMENT**  
**in Paulding County**



# Paulding County Expansion Projects



*Thank you from the Board Members*

<b>Larry Manz</b> President Business & Industry	<b>Jim States</b> Vice President Oakwood Development Co.	<b>Jeff Mumma</b> Treasurer Financial Institutions	<b>Sarah Noggle</b> Secretary OSU Extension
<b>Mike Kauser</b> Township Association	<b>Karl (Bud) Koenig</b> Planning Commission	<b>Greg White</b> Mayor Association	<b>George Carter</b> Paulding CIC
<b>Don Oberlin</b> Antwerp CIC	<b>Ryan Whitaker</b> At Large Member	<b>Brett Wagner</b> At Large Member	<b>Joe Burkard,</b> <b>P.C. Prosecutor</b> Non-Voting Member



**257 FOLLOWERS**  
@PauldingCountyEconomicDevelopment



**336 FOLLOWERS**  
@paulding\_inc



**1,026 LIKES**  
@PauldingCountyEconomicDevelopment



**1,012 CONTACTS**  
Director@pced.net